

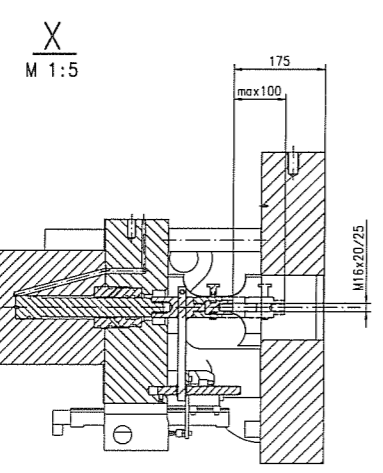
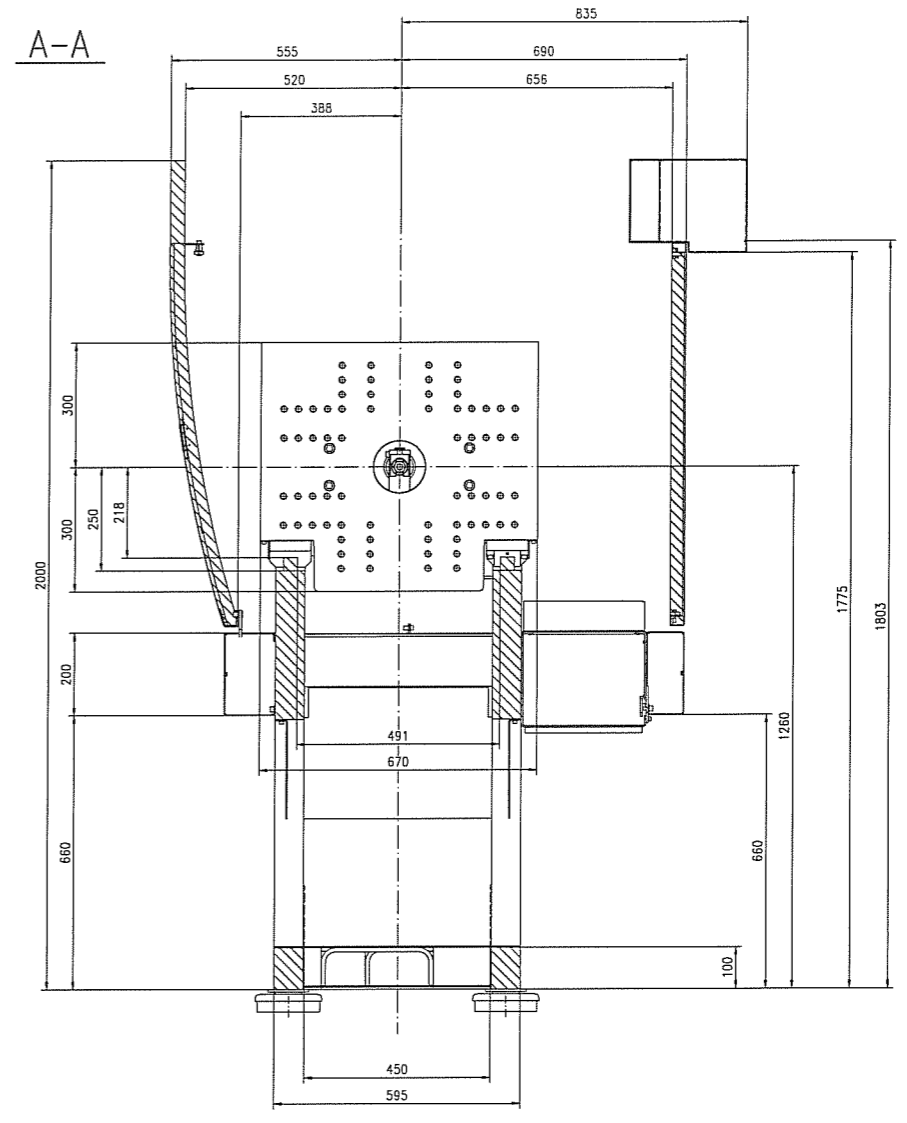
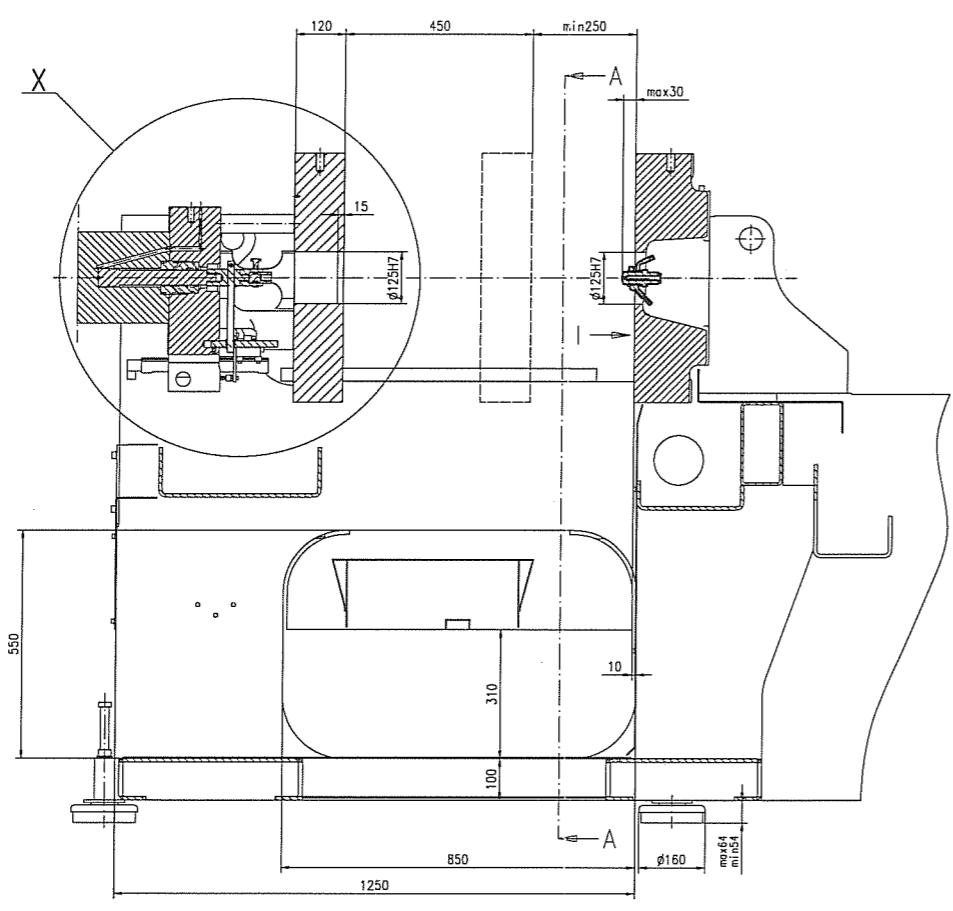
- A Elektroanschluss
main connexion
 - B Kuehlwasser - Zulauf/Schlauchstueck 1'
cooling water-inlet/hosepipe
 - C Kuehlwasser - Ablauf/Schlauchstueck 1'
cooling water outlet/hosepipe
 - D Transportvorrichtung
transport-device
- Gesamt-Elektroanschlusswert
total electric connected load
- Öleinfuellmenge 185L
oil filling of hydraulic system 185L

TYPE	Tech Power Speed	H max (mm)	Gewicht Machine weight (kg)
VC 80/60,70,80		2043	5100
VC 200/60,70,80		2048	5200
VC 330/60,70,80		2048	5300

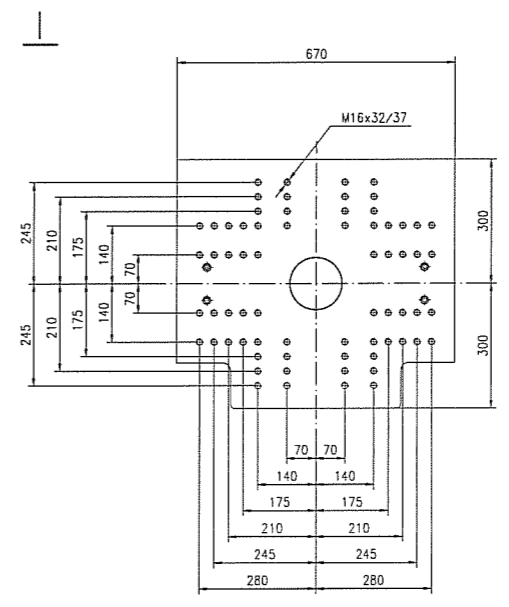
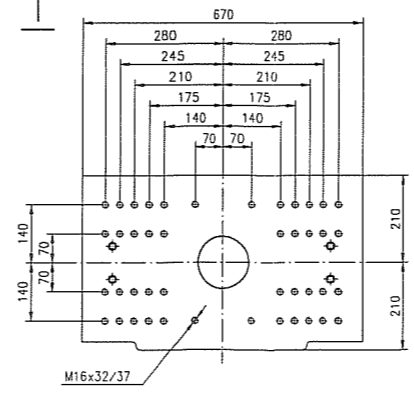
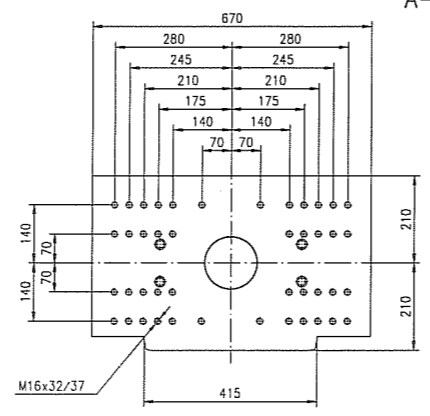
DESCRIPTION: FOUNDATION LAYOUT		Dwg. SCALE: ASSET 1:7	
DRAWING NO.: 1006157		REV. NO.: 00	SHEET NO./TOTAL NO. 1/1
DATE: 2003-01-15		DATE: 2003-01-15	DATE: 2003-01-15
PROJECT: 150 1302 (1993)		OFFICE: FR	OFFICE: FR
MATERIAL: ENZEL, AUSTRIA		MATERIAL: ENZEL, NORTH AMERICA	MATERIAL: ENZEL, SOUTH AMERICA
AGE: 1000000		AGE: 1000000	AGE: 1000000

INFORMATION: INTERVIEW AND UTILIZATION OF THIS DOCUMENT AS WELL AS COMMUNICATION OF THE CONTENTS TO OTHERS WITHOUT EXPRESS PERMISSION FROM THE OFFICE WILL BE HELD LIABLE FOR THE PAYMENT OF DAMAGES. ALL RIGHTS RESERVED. COPYRIGHT (c) 2003.

ENGEL



A-PLATTEN
A-PLATE



TYPE		PLATTENMASSE PLATEN-SIZE	
		STANDARD	OPTION
VC 80/60,70,80	Tech	A	B
VC 200/60,70,80	Power	B	
VC 80/60,70,80	Speed	B	
VC 200/60,70,80			

DESCRIPTION/RECHENUNG
 PLATEN LAYOUT
 WERKZEUGAUFSPANNMASSE

DRAWING NO./ZVL. 1006209
 REV. NO./REV. 00
 SHEET NO./SHEET NO. 1/1

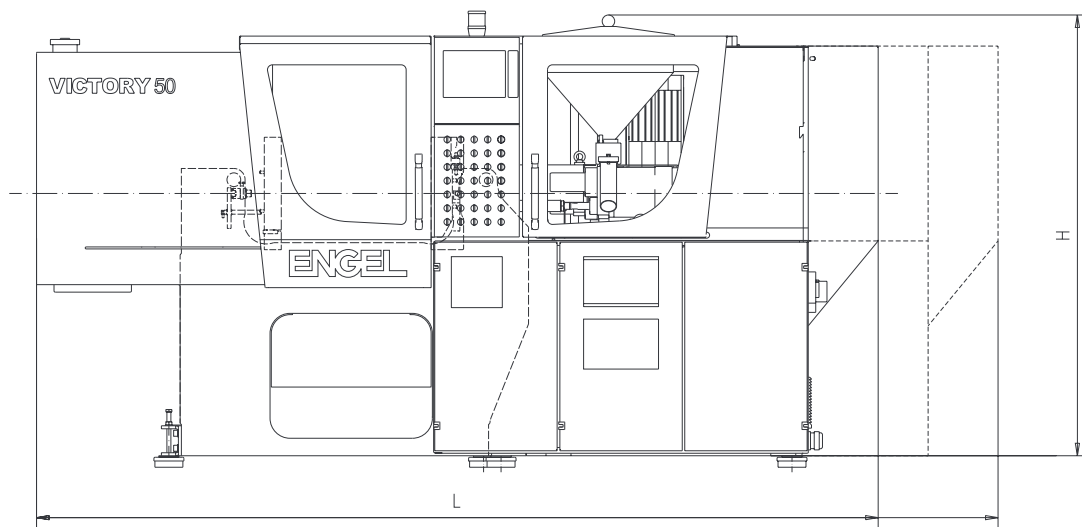
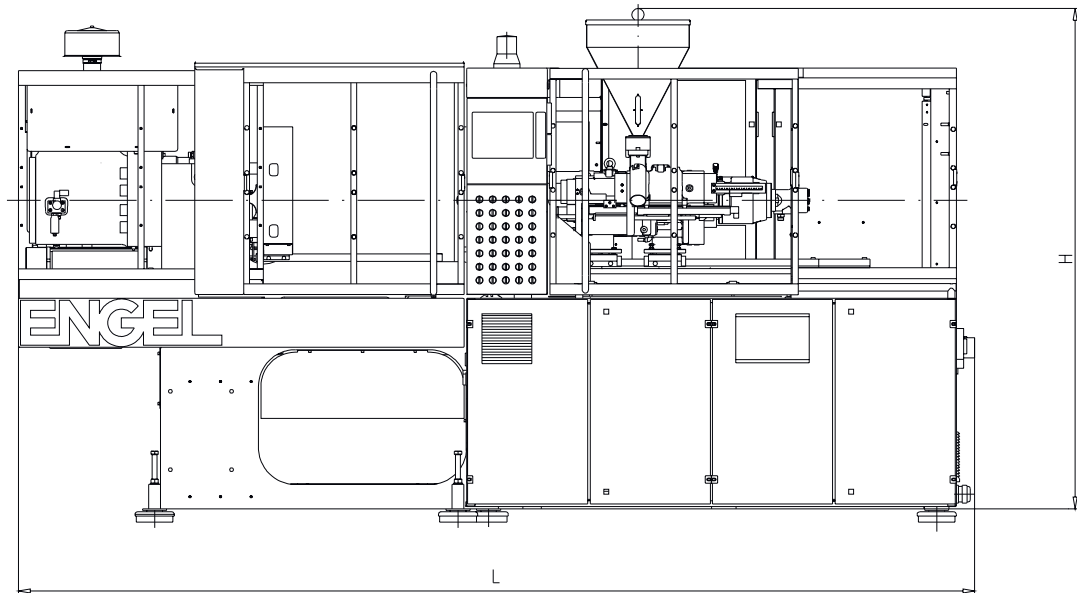
ACC. SYS./WITTE-NORM ETR10009 ISO 8015 ISO 2758-nk
 MATERIAL/PROVIST. ENCEL AUSTRIA MATERIAL/PROVIST. ENCEL NORTH AMERICA MATERIAL/PROVIST. ENCEL KOREA

ACC. TO/GENMESS ACC. TO/GENMESS ACC. TO/GENMESS

REPRESENTATION, DISTRIBUTION AND UTILIZATION OF THIS DOCUMENT AS WELL AS DEMANDATION OF ITS CONTENTS TO OTHERS WITHOUT EXPRESS AUTHORIZATION PROVIDED OTHERWISE WILL BE HELD LIABLE FOR THE PURCHASER OF THIS DOCUMENT. ALL RIGHTS RESERVED. COPYRIGHT © 2002 ENCEL. ALL RIGHTS RESERVED. ALL RIGHTS RESERVED. ALL RIGHTS RESERVED.

21 22 23 24





Maschinenbezeichnung		VC 200/40, 50 VC 200/44, 55 US VC 200/40, 50 PRO	VC 200/60, 70, 80 VC 200/65, 75, 85 US VC 200/60, 70, 80 PRO	VC 200/90, 110, 120 VC 200/100, 120, 130 US VC 200/90, 110, 120 PRO
Gewicht	to	2.7	5.2	7.2
	US tons	3.0	5.7	7.94
Länge	mm	3370	3910	4360
	inches	132.68	153.94	171.65
Höhe	mm	1780	2043 / 2133 ¹	2043 / 2133 ¹
	inches	70.08	80.43 / 83.98 ¹	80.43 / 83.98 ¹
Öfüllung	l	135	185	300
	gal	35.7	48.9	79.3
Pumpenleistung Standard / Tech / Power / HV3	kW	11 / 15 / 15 / -	- / 15 / 15 / 18.5	- / 15 / 18.5 / 18.5
	hp	14.8 / 20.1 / 20.1 / -	- / 20.1 / 24.8	- / 20.1 / 24.8 / 24.8
Filtermotor Standard / Tech / Power / HV3	kW	- / - / - / -	- / - / - / -	- / - / - / -
	hp			
Anschlussleistung Standard / Tech / Power / HV3	kW	18 / 22 / 22 / -	- / 22 / 22 / 25.5	- / 22 / 25.5 / 25.5
	hp	24.1 / 29.5 / 29.5 / -	- / 28.2 / 28.2 / 34.2	- / 28.2 / 34.2 / 32.2
Anschlussstrom ² Standard / Tech / Power / HV3	A	34 / 40 / 40 / -	- / 40 / 40 / 47	- / 40 / 47 / 47

1. VC 200/65, 75, 85, 100, 120, 130 US

2. Bei Spannung 3 x 380V - 415V + N + PE, 50/60Hz

Größenbezeichnung ¹		200/...					
		Standard / Tech / Power			HV3		
Schneckendurchmesser	mm	25	30	35	25	30	35
	inches	0.98	1.18	1.38	0.98	1.18	1.38
Dosierweg	mm		140			140	
	inches		5.51			5.51	
Max. Hubvolumen	cm ³	69	99	135	69	99	135
	in ³	4.21	6.04	8.24	4.21	6.04	8.24
Schneckenrehzahl	min-1		480			550	
	rpm						
L/D Schneckenlänge (3-Zonen)	L/D	24.8	20.5	17.3	24.8	20.5	17.3
Plastifizierleistung (3-Zonen) ²	g/sec	11.8	16.8	24.6	13.8	18.3	26.0
	oz/sec	0.42	0.59	0.87	0.49	0.65	0.92
L/D Schneckenlänge Barriere	L/D	24.8	20.5	-	24.8	20.5	-
Plastifizierleistung Barriere ³	g/sec	14	20	-	15.2	21.8	-
	oz/sec	0.49	0.70	-	0.54	0.77	-
Einspritzstrom ⁴	cm ³ /sec	104	150	204	128	184	251
	in ³ /sec	6.35	9.15	12.45	7.81	11.23	15.31
Einspritzstrom Spritzdruck erhöht ⁴	cm ³ /sec	68	99	134	84	121	165
	in ³ /sec	4.15	6.04	8.18	5.12	7.38	10.07
Spez. Spritzdruck	bar	2090	1450	1065	2090	1450	1065
	psi	30305	21025	15443	30305	21025	15443
Spez. Spritzdruck erhöht	bar	2400	2210	1620	2400	2210	1620
	psi	34800	32045	23490	34800	32045	23490
Düsenweg	mm		230			230	
	inches		9.06			9.06	
Düseneintauchtiefe	mm		30			30	
			1.18			1.18	
Düsenanpreßkraft	kN		28			28	
	US tons		3.15			3.15	
Heizleistung	kW		6.8			6.8	
	hp		9.1			9.1	
Anzahl der Heizzonen inkl. Düse			4			4	
Trichterinhalt	l		34			34	
	lbs		37.5			37.5	

1. Max. Hubvolumen [cm³] x Spez. Spritzdruck erhöht [bar] / 1000

2. Werte für Polystyrol (nach ENGEL Werksnorm ETR 10100)

3. Werte für HDPE (nach ENGEL Werksnorm ETR 10100)

4. Abhängig von Pumpenantriebsleistung